

Your guide... TO HOUSEBOATING ON THE TWEED RIVER!



Copyright © Robert Berger 2001

All rights reserved. No part of this publication may be reproduced, stored in a retrieval system, or transmitted, in any form or by any means, electronic, mechanical, photocopying, recording or otherwise, without the prior written permission of the author.

TWEED RIVER STORY BOOK

CONTENTS PAGE

We are pleased to welcome you aboard for a houseboat adventure cruising the beautiful Tweed River! We hope this story book will assist with planning your journey up river so you may experience all that the Tweed has to offer.

Tweed Marina.....	3
Terranora Inlet - West.....	4-6
Pick Up Area.....	7-8
Tweed River.....	9
Fingal.....	10-12
Chinderah.....	13-15
Dodds Island.....	16-18
Stotts Island.....	19-20
Tumbulgum.....	21-23
Condong.....	24-26
Murwillumbah.....	27-30

TWEED RIVER STORY BOOK

TWEED MARINA



The Tweed Marina is where your adventure begins! After checking in with our office team, you will be directed to where your houseboat is docked along the jetty.

We operate a piloting system to take you in and out of our marina precinct to a designated drop off/pick up location in the Terranora Inlet. This will be where you are free to explore the river on your own. We highly recommend anchoring in this location or no further south of Chinderah on the day prior to your return day to avoid any morning delays. Please check with your briefing officer for alternative anchorage locations if there is limited space.

TWEED RIVER STORY BOOK

TERRANORA INLET - WEST



The Boyd's Bay area is named after a local fishing family famous in the Tweed area.

You are welcome to pass under the Boyds Bay Bridge and explore the upper reaches of the Terranora Inlet (follow charts).

NOTE: Remember on your journey back, you are only permitted to pass under the bridge **against** the tide as the current will sweep the boat into the pylons.

Do NOT anchor within 200m on either side of this bridge as submerged cables will snag your anchor.

TWEED RIVER STORY BOOK

TERRANORA INLET - WEST

On the right, just before the timber jetty there is a fantastic fresh seafood outlet selling cooked and uncooked seafood. We recommend Scales Seafood personally as a place to visit. There is also Riverland Cafe right next door. Both are located about 500 metres above Boyds Bay Bridge. Heading west along Kennedy Drive you will also find a Supa IGA, Chempro chemist, bakery and various takeaway outlets –all within a 300m walk of the boat ramp/playground. Anchor out from the floating jetty for safe anchorage (make sure you let out the anchor chain to the **marker for safety**) and go across by tender. You can even access these shops by travelling a short distance in the canal near the boat ramp.



As you travel towards the next bridge, the building on the left just before you pass under the bridge is the Naval Cadets'. This bridge was constructed on land and then pushed out section by section from shore.



TWEED RIVER STORY BOOK

100 metres past the bridge on the left is a general store (bait, ice etc), a bottle-o and cafe. As you travel along this part of the river keep to the southern side or left of the river travelling up stream

After a short while, you will notice the houses end and the mangroves start, this is a nice spot to anchor in a southerly wind. From here, following the river around to the left for couple hundred metres is also a nice place to get protection in an easterly wind. As you travel along there will be houses on the right and you will come to a Y in the river. If you go to the left this is a great place out of the **southerly and south-easterly winds**. You can pump yabbies for bait at low tide and this is very good spot for fishing at night-time. Alternatively, if you keep to the right of the small island, but do not travel any further past this point. **Be careful - shallow water.**

Important Note:

Heading back to the Tweed River - remember when you leave the Terranora inlet you **are not permitted** to pass under Boyds Bay Bridge with the current (travel against the current only), ie the tide must be on the way in.

This is for the safety of you, your guests and the houseboat.



TWEED RIVER STORY BOOK

TERRANORA INLET - PICK UP AREA

From Boyds Bay Bridge heading towards the Tweed River you will notice on the right a floating jetty. You can anchor

a timber jetty on Anchorage Island which will be to the left.

Running along Anchorage Island from the timber jetty between shore and the green markers is a safe anchorage point in **northerly winds**.



TERRANORA INLET - PICK UP AREA

Ukerebagh Island is the birth place of the late Neville Bonner, who was the first Aboriginal Australian to become a member of the Parliament of Australia.

This aerial map shows Terranora Creek and Inlet. The water is colored in shades of blue and green to represent depth. Two thick black lines indicate depth contours. Several red dots are placed along the shoreline and in the water, likely indicating specific locations of interest. A green dot is located near the top right, labeled 'Body Motion'. The map also shows surrounding land with trees and buildings, and labels for 'Harbour Dr', 'Island Dr', and 'Terranora Creek'. A text overlay at the bottom left reads 'Very shallow - keep out'.

TWEED RIVER STORY BOOK

TWEED RIVER

As you turn **right** in to the Tweed River heading south, make sure you go well across towards the other side, as there is a sand bar in the middle of the river.

Warning: do not turn left - extreme danger



Remember as you exit the inlet the green markers stay to your right.

TWEED RIVER STORY BOOK

FINGAL



As you begin to travel up river, the eastern side of Ukerebagh Island will be on your right hand side. This area is great for dropping anchor and having a swim. The rock wall is perfect for snorkelling on a high tide. Just be careful of the current here as it can be quite strong.

Further along Fingal strait, you will see a playground and a boat ramp on the river bank to the left, this is a great spot for northerly wind protection.

CAUTION: Keep an eye out for southerly change. Just a few hundred metres from this park you will find the village of Fingal with access to Dreamtime Beach. The village has a general store, cafe and Fingal lighthouse is worth a visit.

You can anchor in the main channel and go across by tender and walk into Fingal Village.

Warning: If you intend to leave the houseboat and visit Fingal Village etc either leave an experienced person onboard, or ensure that the houseboat is securely anchored and stay with it for half an hour prior to heading to shore. It is not recommended to leave the boat unattended if it is windy.

TWEED RIVER STORY BOOK

FINGAL

Opposite the Old Boat Harbour park on the other side of the river is a great spot for fishing for flathead & whiting.

As you travel up the river you will pass the Coolangatta Tweed Heads Golf Club on the right, you cannot miss the big golf ball on top of the club.

Rocky Point outside the golf club is a great spot for fishing eg tailor, bream, whiting and flathead. You can also pump yabbies at low tide on the nearby sandbanks.



TWEED RIVER STORY BOOK

FINGAL TO CHINDERAH

As you pass the golf club and head towards Barney's Point Bridge be sure to pay attention to the markers.

Keep the green to your right and the red to your left.

(Note: Don't forget to reverse this point when you cruise back down the river)



Remember to cruise between the bridge spans beneath the yellow signs.



TWEED RIVER STORY BOOK

CHINDERAH

As you travel under the Barney's Point Bridge you will notice to the left a concrete jetty. This is part of the old lifting span bridge and was once the Pacific Highway. It was later replaced with a much taller bridge so traffic could flow without stopping for large vessels coming along the river. This old piece of highway makes for a great fishing platform for many locals.



If extra supplies are needed there is a service station within a 100m walk of this area which can be accessed via tender to shore.

Travelling further south past the caravan parks on the eastern side of the river, just across the road from the last caravan park there is great seafood outlet. We recommend Tweed River Seafoods when you are up this end of the river.

Tweed River Seafoods is open 9am-6.30pm, 7 days a week. Cooking starts from 10.30am.

Beside Tweed River Seafood's is Chinderah Bay Antiques. Here you will find a large display of all types of antiques and his store is very interesting just to wander through and browse. Open Friday to Tuesday 10am – 4pm.

TWEED RIVER STORY BOOK

CHINDERAH

If you'd prefer something a little different to seafood, Mariner's Chinese Restaurant has your take away needs sorted and is open Tuesday to Sunday 4.30pm to 8:30pm.

5 mins up the river on the same side is the Chinderah Tavern which offers great lunches and dinner along with Cubby Bakehouse, serving coffee and delicious cakes!

If you have a large group, it might be a good idea to book a table prior to your arrival. You can anchor out from the floating jetty and go to shore using your tender. Remember, you aren't permitted to drive the tenders at night without lights so lunch would be the best option.



CHINDERAH - OXLEY COVE

As you set off from Chinderah, just a little way up on your right is the entrance to Oxley Cove. This area is a small canal estate and can be great for swimming as there is low current. Tucked in off to the right of the entrance is a sandy beach.



DODDS ISLAND

Great southerly & northerly wind protection.

Northerly winds when coming from Tweed heading towards Tumbulgum, you will pass the entry to Oxley Cove. Keep to the Oxley Cove side of the river. This side will give good protection.

Warning: when you leave you must travel back towards the Oxley Cove entrance before you cross to the southerly side of the river to avoid running aground. **Do not take any short cuts, there is a sand bank in the middle of the river.**



TWEED RIVER STORY BOOK

DODDS ISLAND

Southerly winds - all along the southern side is good protection. Dodds Island (**piggery flats**) - this area is renowned for its fishing and crabs. There is a large sand bar down the **centre** of the river; this is where you fish for whiting and flathead. The best way is to go ahead of your houseboat and drift down along the sand bank, or at low tide, along the edge.



Also at low tide you can pump yabbies, if you have no luck there, try between Chinderah & Dodd's Islands.

Passage between Dodd's Island and Chinderah – by tender only. Set your crab pot along the mangroves and keep it in sight of the houseboat.

TWEED RIVER STORY BOOK

DODDS ISLAND TO STOTTS ISLAND

Approximately 200m west of the dredge is a deep hole to the right hand side of the river that is great to drop a line.

As you round the corner to the left, it pays to keep well to the left (eastern) side of the river to save running aground...so you don't spend time high and dry.



As you travel along this stretch, you will notice to the left, some large sheds. Some of our houseboats were built in this very spot.

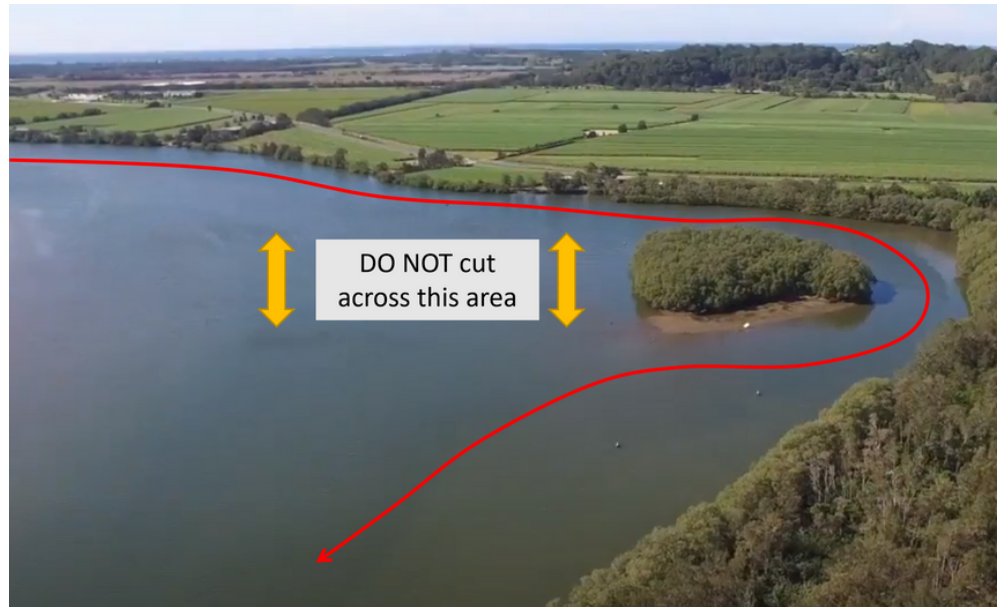
This area is particularly great for flathead fishing. Drifting along in the tinny has better results.



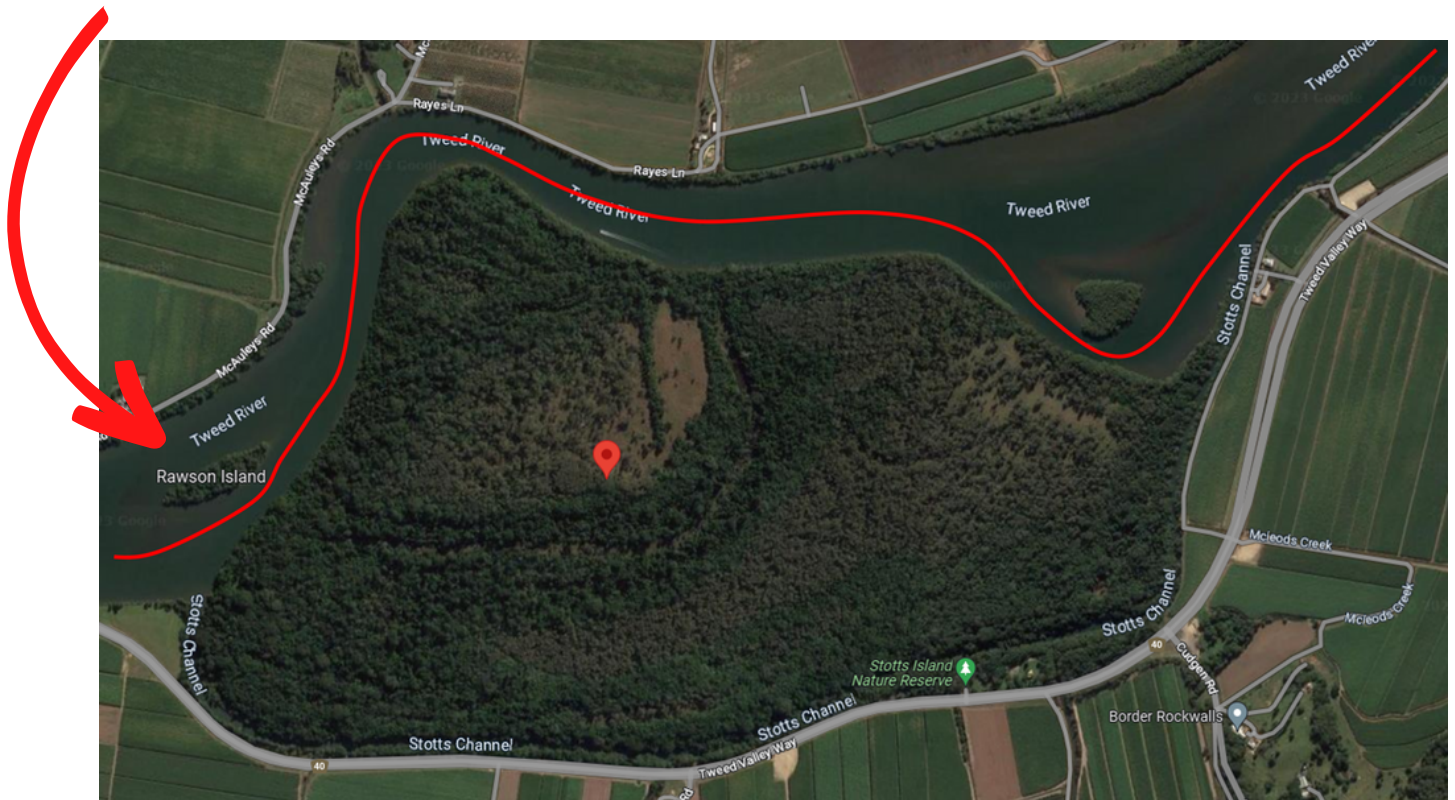
TWEED RIVER STORY BOOK

STOTTS ISLAND

Just ahead is Stotts Island. **Make sure you go between the little island and Stotts Island** or you will run aground. **Do not anchor** between Stotts Island and the little island blocking the channel.



As you round the western side of the island, be sure to cruise between Rawson and Stotts Island.



TWEED RIVER STORY BOOK

STOTTS ISLAND

Stotts Island is a subtropical floating island and is one of the largest in Australia, spanning 190 acres.

It is home to 47 species of birds, 6 species of lizards, 3 species of snakes and frogs. Here you would even find the endangered Mitchell's rainforest snail.

This is a great spot to anchor in a southerly wind. Sit back and enjoy the rainforest surrounds and wildlife. You may even see the occasional dolphin venture this far up river.



TWEED RIVER STORY BOOK

TUMBULGUM

Tumbulgum is a lovely village, its name meaning “meeting place of two rivers”. Tumbulgum was originally a cedar loggers settlement and many of the early buildings were constructed of red cedar and have been gazetted by the National Trust.



These days, activity at Tumbulgum centres on the river. A public wharf is conveniently located in the village centre.

This is a NO NOISE area so please be considerate of the local residents.



TWEED RIVER STORY BOOK

TUMBULGUM

Dotted along the banks of the river you will find Tumbulgum Tavern, House of Gabriel, offering breakfast and lunch Wednesday to Sunday along with a general store, bakery, cafe.

Husk Distillers is only a short walk from the town centre and offers distillery tours and signature cocktails. Enjoy an afternoon relaxing in the sun.

If you wish to visit the village, drop anchor 4 boat lengths from shore, opposite the general store and use the tender to go to shore.



TWEED RIVER STORY BOOK

TUMBULGUM - ROUS RIVER

The Rous River joins the Tweed River at Tumbulgum. This is a must place to visit. When you travel up the Rous in the houseboat, **drive slowly**, this is a very tranquil spot. On your map it shows the recommended spot to anchor.



An interesting spot to visit whilst cruising up the Rous River is the Tumbulgum Historic Cemetery. If you anchor your houseboat up just in from the entrance to the Rous River, you can then access the shore via your tender. You will see the road on your right only a metre off the river bank, together with a speed sign.

When climbing up the bank be careful on the rocks as they can be very slippery. The cemetery entrance is located 300m to the left along the road from this spot. This cemetery has been restored and is a very interesting place to visit



TWEED RIVER STORY BOOK

CONDONG

Leaving the Rous and heading south towards Condong, about 300 meters before the bridge and sugar mill, there is a boat ramp and a floating jetty on the eastern side of the river. Condong has a cafe/post office and Bowls club which is directly opposite the Sugar Mill.



The Condong Sugar Mill sits on the banks of the Tweed River and has been crushing cane since 1880.

We'd highly recommend stopping by for a coffee at Stamp and Grind cafe.

At certain times of the year, tours of the sugar mill are available and these commence at the Stamp and Grind cafe. There is also a small history display on the mill located at the cafe.



TWEED RIVER STORY BOOK

CONDONG



Warning: The bridge at Cane Road is low and narrow.
Houseboats are NOT permitted to travel under this bridge.

Travelling under this bridge will incur additional fees and you will be 100% liable for any damages.



TWEED RIVER STORY BOOK

CONDONG

If you would like to visit Murwillumbah, you can call for a taxi/Uber or if convenient, keep a car close by on shore - the drive from Condong to Murwillumbah main street is less than 5kms. Alternatively, if you have your own runabout with a suitable motor, you are welcome to explore this last short stretch of river.

If you leave the houseboat, ensure you let the anchor out an extra 20 seconds for safety. You can access shore using your tender, be sure that you tie the tinnie to a post or an immovable object.



MURWILLUMBAH

Murwillumbah sits on the eastern foothills of the McPherson Range and is quite hilly. Many of the buildings are Art Deco in style and there are plenty of cafes, clothes and antique shops to explore.



The name Murwillumbah derives from an Aboriginal word meaning "camping place" - from Murrie, meaning "aboriginal people", Wolli, "a camp"; and Bab, "the place of". The first people to live in the area were Bundjalung people. Nearby Mount Warning and its attendant National Park are known as Wollumbin, meaning "Cloud Catcher", in the Bundjalung language.

TWEED RIVER STORY BOOK

MURWILLUMBAH

The best way to visit this town via your own runabout is by accessing the jetty at the Riverview Hotel on the left, which has great food and amazing views!

Also located in this area is the Tourism bureau and the Tweed Valley Rail Trail across the road.



TWEED RIVER STORY BOOK

MURWILLUMBAH

A short stroll over the bridge from the River View Hotel are the main streets of this little country town.

Here you have an array of shops to visit along the main street, with plenty of cafe's, pubs and restaurants to choose from. Along with the Tweed Regional Museum. There is a Coles supermarket in the shopping mall and an IGA in the main street for extra supplies.



TWEED RIVER STORY BOOK

MURWILLUMBAH

If you have your own boat, you are able to travel as far upstream from Murwillumbah as the weir. This is a brick wall that separates the salt water from the fresh.

We suggest you keep at least 50-100 meters from the brick wall as it is very shallow.



Photo: via Tweed Shire Council



TWEED RIVER STORY BOOK

KICK BACK, RELAX AND ENJOY...

From all of us at Berger Houseboats, we hope that you enjoy your houseboat holiday and that this information has been of some assistance and interest to you.

If you would like any assistance with planning your journey please feel free to ask.



FOLLOW US



@BERGERHOUSEBOATS
#BERGERHOUSEBOATS

Don't forget to follow and tag us in your holiday photos! We'd love for future houseboaters to catch a glimpse of just how amazing the Tweed River truly is!



Tweed River - NSW - Tweed Heads

(07) 5524 3222

info@bergerhouseboats.com.au

www.bergerhouseboats.com.au



Enjoy

YOUR HOUSEBOAT ADVENTURE
ON THE BEAUTIFUL TWEED RIVER!



(07) 5524 3222
44 Frances Street
Tweed Heads NSW 2485
bergerhouseboats.com.au